



Erosion site on east levee, Station 67+75.

Photo taken February 21, 2017.



Repaired erosion site, Station 67+75.

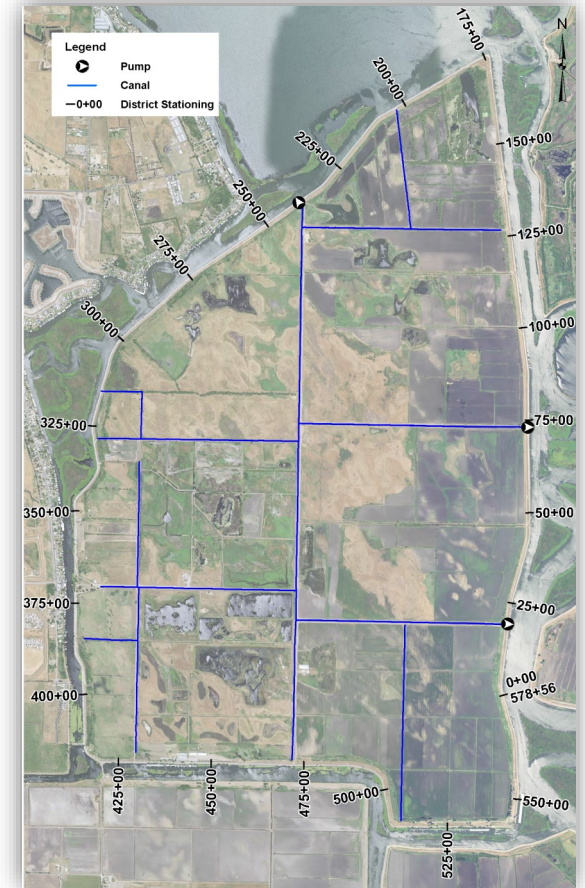
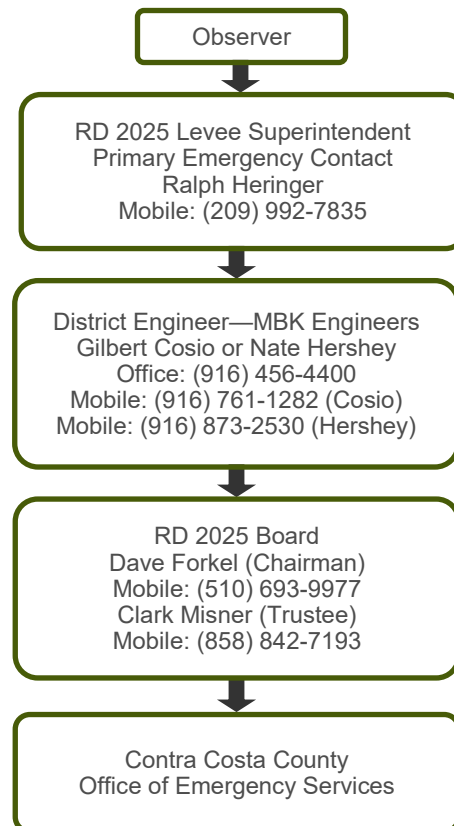
Photo taken February 24, 2017.

What to do in an Emergency

Contact the District immediately if there is an emergency situation that involves the levees or the drainage system. Remember to be aware of your surroundings and do your best to not jeopardize your own safety. Try to remain calm and report accurate, factual information to the proper authorities.

Emergency Contacts

The chart below should be used to notify the District in an emergency situation.



RECLAMATION DISTRICT NO. 2025 HOLLAND TRACT

12-14-2020



RD 2025 Background

Formed in April of 1918, Reclamation District No. 2025 maintains Holland Tract's nearly 11 miles of levees, which protects approximately 4,294 acres of land. The District also maintains the canals and pumping stations that drain the island.

- Protects assets valued at ~\$16 million
- Protects lands valued at ~\$30 million
- Funded through landowner assessments and state grants when eligible

Governance

RD 2025 is governed by a 3 person board of trustees. The current board includes the following members:

- ◆ Mr. David Forkel, Chairman
- ◆ Mr. Randall Neudeck, Trustee
- ◆ Mr. Clark Misner, Trustee

Mission Statement

Our mission is flood protection for Holland Tract providing for the public's health and safety by operating and maintaining the levees, district canals and pump stations in a safe, efficient and responsible manner.

What We Do

District staff perform routine maintenance and operation of levees and drainage system, including all-weather levee access roads, repair of levee settlement and erosion sites, debris removal, drainage and toe ditch maintenance, vegetation and rodent control, routine levee patrols, and flood emergency planning and preparation.

Authority

The District is responsible for general supervision and control over the construction, maintenance, and operation of the reclamation works, and generally over the affairs of the district, pursuant to the CA Water Code § 50000, et seq.

What can I do to help?

- 1) Be observant and report any unusual levee issues, including waterside erosion, beaver activity, levee cracking or slumping.
- 2) Use water wisely, excessive water diversions can impact neighbors, are costly, and may overwhelm the Districts drainage capacity.

Need a permit?

If you are working on or near a levee or drainage system you may need a District encroachment permit. Or, if you are diverting water from an adjacent river or slough you may also need a state permit.

Contact the District office for more information.



Completed Improvements on East Levee, 2012

Contact Us

Reclamation District No. 2025
343 East Main Street, Suite 815
Stockton, CA 95202

Telephone: (209) 943-5551
Fax: (209) 943-0251
Email: hoslettlaw@sbcglobal.net