

FLOOD CONTINGENCY PLANNING INFORMATION

A.1. SPECIAL FLOOD CONSIDERATIONS

H1 - PUMP STATION 1
Located near station 19+00. Discharge pump may be used during a major flood event; however, additional pumps would be required to dewater the island.

H2 - PUMP STATION 2
Located near station 73+00. Discharge pump may be used during a major flood event; however, additional pumps would be required to dewater the island.

H3 - PUMP STATION 3
Located near station 239+00. Discharge pump may be used during a major flood event; however, additional pumps would be required to dewater the island.

H4 - HOLLAND TRACT BRIDGE
Holland Tract Bridge is the only motor vehicle egress for Holland Tract. A secondary bridge is located in the general vicinity of Sandmound Blvd. Contact the local Reclamation District to gain access to Sandmound Blvd in the event of an emergency.

H5 - FRANKS TRACK OPEN WATER
The flooding threat is predominantly tidal, with some local runoff that can influence conditions. The Old River (on the east side of the island) could pose a riverine flooding threat. Franks Tract (large expanse of open water) can create erosion due to wind/waves.

H6 - WAVE FETCH
The wave fetch is relatively short on the southern, eastern, and western portions of the island and is generally not a concern over much of the District. The northern portion of the island has a wave fetch of up to 3.5 miles across Franks Tract. Channel widths generally vary from 150 to 1,450 feet. The levees are armored with riprap, except some areas along the southern and eastern levees.

H7 - LEVEE STATUS
There is no levee certification status for Holland Tract. The levee geometry generally meets the PL 84-99 Delta Specific Standard.

H8 - TRACT INHABITANTS
Two active marinas are located along the south levee (Lindquist Landing and Holland Riverside Marina), with up to 40 inhabitants living boats at any given time.

H9 - LEVEE ACCESS
County-maintained road is located on the crown of the south levee and portions of the east levee.

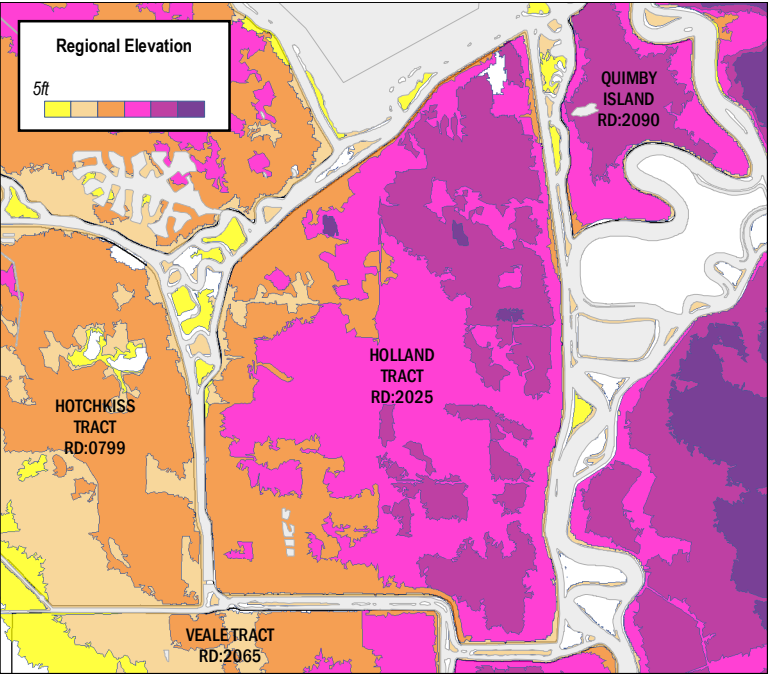
H10 - LAND USES
Portions of the island are farmed or leased for grazing, with operations supported by various facilities and equipment. The island also has permanent habitat sites.

H11 - PUMP STATION INFRASTRUCTURE
Infrastructure includes pumping stations for drainage and associated electrical lines.

LOCAL TOPOGRAPHY

The general elevation ranges are shown by shading within the levee maintenance area below. General areas of high ground and low ground can be derived from the mapping presented below. Large floods, or a dam failure, could result in extreme flood depths. Flood depths may also be significantly greater in depressions such as channels or road cuts or next to obstructions such as railroad embankments. Flood depths may also be significantly less, depending on individual variations in terrain or where structures are raised above general ground elevation.

MAP DATA SOURCE: DRMS Risk Report [URS/JBA 2008c]



B.1. FLOOD CONTINGENCY OPTIONS

H1 - HIGH WATER EVENT
Multiple high water events caused by large volumes of discharge from regional and local drainage system, coupled with tides and low atmospheric pressure. Vulnerable area approx.. 2,000 feet. Muscle wall or temporary earthen levee is recommended.

ACTIONS
The District maintains stockpiles of riprap on the island and has equipment available to perform levee maintenance and repairs.
1. Deploy flood fight materials to prevent levee degradation and activate workforce for levee patrols.
2. Prepare resources for temporary earthen levee or muscle wall.
Muscle Wall Material Required:
2000 feet of temporary levee will require approximately 334 segments of muscle wall, 3340 sandbags, and 1670 cubic feet of sand.
OR
Temporary Earthen Levee Material Required:
2000 feet of temporary earthen levee (2ft high x 4ft wide) will require approximately 40 rolls of 10 mil plastic sheeting, 600 sandbags, and 90 cubic yards of fill. Approximately 11.1 cubic yards of fill for sand bags and 78.9 cubic yards of fill for visqueen fill.

H2 - WAVE WASH
Wind waves could occur at this location. Wind waves causing erosion will lead to levee failure if not addressed for long periods of time; protection area approx. 1000 feet.

ACTIONS
The District has flood fight materials stored on-island for use during a flood fight.
1. Deploy flood fight materials to prevent levee degradation.
2. Protect area exposed to wind waves with envelope style wrap.
Wave Wash Protection Material Required:
1000 feet of envelope wave wash will require approximately 20 rolls of 10 mil plastic sheeting, 300 sandbags, 150 cubic feet of sand, 20 rolls of twine, 100 plastic buttons or rocks, and 200 [1" x 3" x 2'] stakes.

H3 - BOIL FROM SEEPAGE THROUGH LEVEE
Boil events caused by large volumes of discharge from regional and local drainage system, coupled with tides and low atmospheric pressure. Not associated with wind generated waves and erosion. Response to boils require sack ring, or boil ring, to control water flow and pressure through levee to minimize transport of fine material through seepage that has uncontrolled flow of water and transport of levee material. Tides and low pressure can play a part in both wind and seepage impact potential.

ACTIONS
1. Protect and isolate seepage area with boil sack ring.

C. REPAIR CONTRACTORS & MATERIAL SUPPLIERS

FLOOD FIGHT LABOR		
Labor Ready Sacramento 916.374.9501	Labor Ready Concord 925.827.2352	Labor Ready Oakland 510.981.8226

REPAIR CONTRACTORS			
Dutra Group 160 River Rd, Rio Vista, CA 707.374.5127	Teichert Construction 24207 County Rd 100A, Davis, CA 530.406.4200	Teichert Construction 4401 Duluth Ave, Roseville, CA 916.645.4800	Teichert Corporate Office 3500 American River Dr, Sacramento, CA 916.484.3011

MATERIALS SUPPLIERS		
Dutra Materials 615 River Rd, Rio Vista, CA 707.374.6964	Teichert Aggregates 4249 Hammonton Smartville Rd, Marysville, CA 530.743.6111	Teichert Aggregates 8760 Kiefer Blvd, Sacramento, CA 916.386.6905
Dutra Materials 1000 Point San Pedro Rd, San Rafael, CA 415.459.7740	Teichert Aggregates 3331 Walnut Ave, Marysville, CA 530.749.1230	Teichert Aggregates 35030 County Rd 20, Woodland, CA 530.661.4290
Syar Industries 16560 County Rd 89, Esparto, CA 530.787.2020	Teichert Aggregates 3417 Grant Line Rd, Rancho Cordova, CA 916.351.0123	Teichert Ready Mix 8950 Cal Center Dr, #165, Sacramento, CA 916.361.5000
Syar Industries 885 Lake Herman Rd, Vallejo, CA 707.643.3261	Teichert Aggregates 13333 White Rock Rd, Rancho Cordova, CA 916.985.2052	

LOCAL SUPPLY PROVIDERS		
Ace Hardware Antioch 501 Sunset Dr, Antioch, CA 925.757.2500	Ace Hardware Pittsburg 125 E Leland Rd, Pittsburg, CA 925.432.6089	Home Depot Brentwood 5631 Lone Tree Way, Brentwood, CA 925.513.6060
Ace Hardware Brentwood 8900 Brentwood Blvd, Ste J, Brentwood, CA 925.634.3201	Lowe's Antioch 1951 Auto Center Dr, Antioch, CA 925.756.0370	Home Depot Pittsburg 2300 N Park Blvd, Pittsburg, CA 925.473.1900
Ace Hardware Oakley 305 5th St, Oakley, CA 925.625.2449	Lowe's Antioch 5503 Lone Tree Way, Antioch, CA 925.779.6060	